



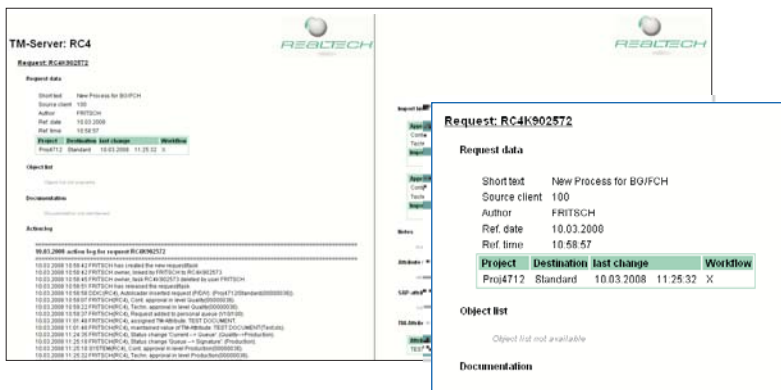
# TransportManager

## The Challenges of SAP Change Management

SAP systems handle mission-critical and accounting-relevant processes within your business while having to comply with ever increasing requirements regarding consistency, transparency, and traceability of processes and data. Changes in these systems often entail risks that could bring your entire business to a halt.

These risks can only be minimized through high standards of quality and security in change management. Secure transports thus play a central role in SAP environments ensuring that changes are transferred to productive operation where they will affect your day-to-day business.

TransportManager:  
Reporting



The world-renowned consultancy Ernst & Young has confirmed that REALTECH's TransportManager supports the requirements of guidelines listed above. In combination with its SAP certification as an official add-on product, which was carried out on the latest SAP NetWeaver release, this underlines the investment security that goes along with purchasing TransportManager!

## REALTECH TransportManager

REALTECH TransportManager is an easy-to-use software for the automated distribution of program and data modifications within your SAP ABAP and Java applications. Authorization concepts and workflows tailored to your needs control the transport of these changes into distributed SAP system landscapes.

Now you can finally establish a dual control principle and have your respective departments confirm successful testing of new functionalities through electronic signatures. Boost motivation and efficiency of your SAP Basis staff by freeing them of routine tasks.

With TransportManager, version mismatches and the associated financial losses are a thing of the past. Invest less time and money in quality assurance and avoid collisions or the transport of unwanted changes into mission-critical productive systems.

TransportManager is fully integrated in SAP, eliminating the need for additional hardware. Its convenient operation within the familiar SAP environment guarantees rapid implementation and acceptance among users and administrators.

## Caution! Audits, SOX and Other Regulations

The definition and adherence to change processes as well as their traceability and continuous documentation are high on the agenda of internal and external auditors. This is pushed by new statutory requirements, which are the driving force behind the introduction of an internal control system.

The legal requirements are set out especially in the Sarbanes-Oxley Act (SOX), the German Banking Act (KWG) and the German principles of proper accounting (GOB), regulations which concern businesses with both national and international operations. Processes and applied solutions have to comply with global requirements. Companies that are publicly listed in the USA are even required to obey stipulated regulations under penalty of law.

## Benefits for Your Business:

- Increased availability and consistency of your SAP systems
- Avoidance of collisions and version mismatches in SAP change management
- Reduced quality assurance efforts
- Highly transparent processes because of automatic notifications to everyone involved
- Individual authorization concepts for the approval of transports and workflows
- Synchronous transport of ABAP and Java objects in SAP NetWeaver
- Compliance with specific audit requirements (SOX and KWG)

# TransportManager

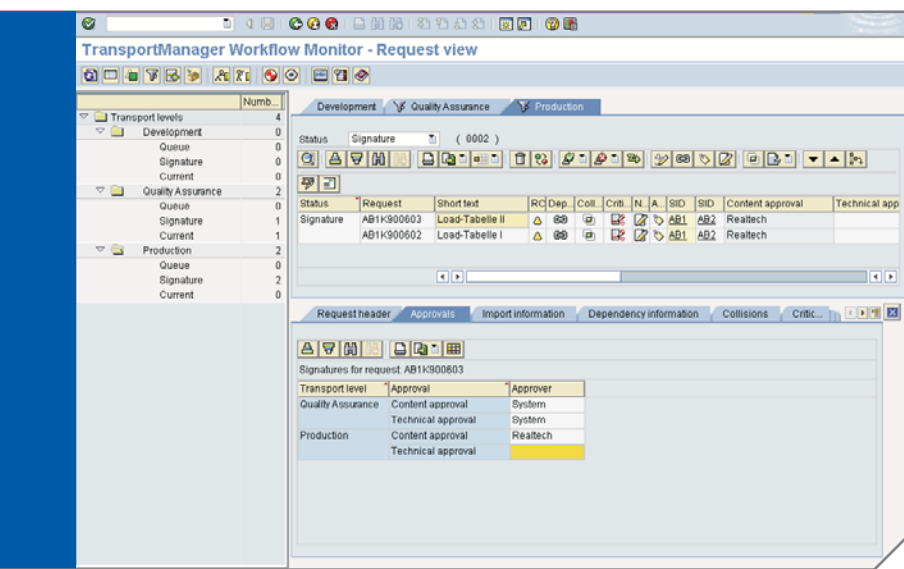
## Synchronization of ABAP and Java Transports

The introduction of SAP NetWeaver increases the level of heterogeneity in SAP landscapes. The resulting dependency on development objects of the ABAP and Java environment call for a solution that ensures the synchronous distribution of these objects into the test environment and, subsequently, into the production systems.

TransportManager allows you to synchronously distribute ABAP and Java objects that are logically interdependent in SAP NetWeaver system landscapes. The management of the related transports is consistent and is realized in a shared workflow monitor.

The new solution is based on the Enhanced Change and Transport System (CTS+) introduced by SAP for SAP NetWeaver 2004s that consolidates and harmonizes former stand-alone solutions in the field of SAP software logistics.

TransportManager:  
Workflow Monitor



## TransportManagementCenter – Enterprise Monitoring

Transport Management Center (TMC) is a supplement to TransportManager which allows you to benefit from the TransportManager advantages across individual system landscapes. A central console lets you monitor and manage your entire system landscape – giving you ultimate control over all transport processes even in complex IT environments.

## Comprehensive Application Lifecycle Management

With the ChangeManagementInterface (CMI) module, TransportManager offers open interfaces for the integration in existing change and application lifecycle management solutions, thus enabling the seamless incorporation of the SAP world into your central ITIL processes. This combines the benefits of a general change management solution with the SAP-specific advantages of TransportManager. At the same time, users can continue to work with an interface they are familiar with.

## Worldwide Confidence

With more than 1,000 instances installed, there are more than 150 international SAP customers that are successfully using TransportManager. Our development headquarters in Walldorf, Germany, is located in close proximity to SAP, thus guaranteeing the fast and compatible integration of new SAP functionalities into our software. The high level of compatibility with the SAP standard creates additional investment security.



**Jürgen Wagner, SAP Administrator at MAN Nutzfahrzeuge AG**

*"The REALTECH solution for automated transport management has stood the test of day-to-day SAP Basis administration. It alleviates us of a huge burden. Managing transports used to require significant manual work — which has been all but eliminated since introducing TransportManager. At the same time, we have been able to minimize the risk of system outages caused by uncontrolled SAP transports."*



VERLAGSGRUPPE

**Holger Böhn, head of the SAP Basis group at Bauer Verlagsgruppe:**

*"The TransportManager delivers the cutting-edge functionality we require to model our entire authorization concept for day-to-day change and transport management tasks. The REALTECH solution not only enables us to handle critical objects, such as reports containing personal data, separately; it also allows us to implement comprehensive dual control."*

